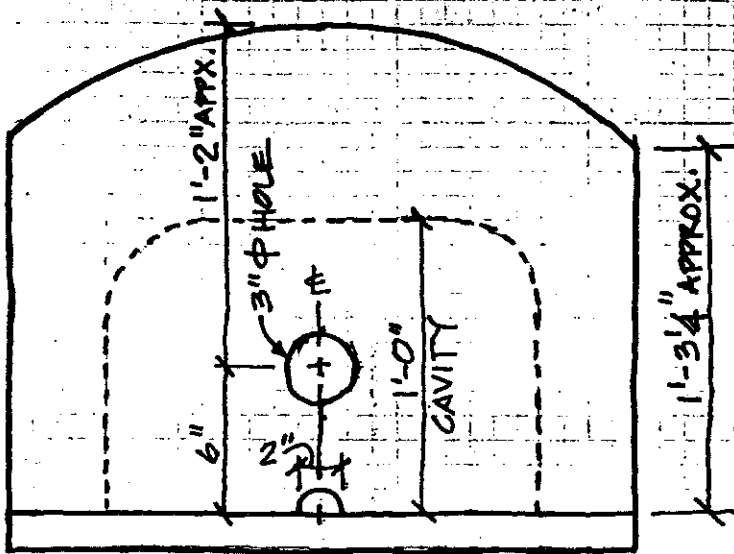


NOTE-

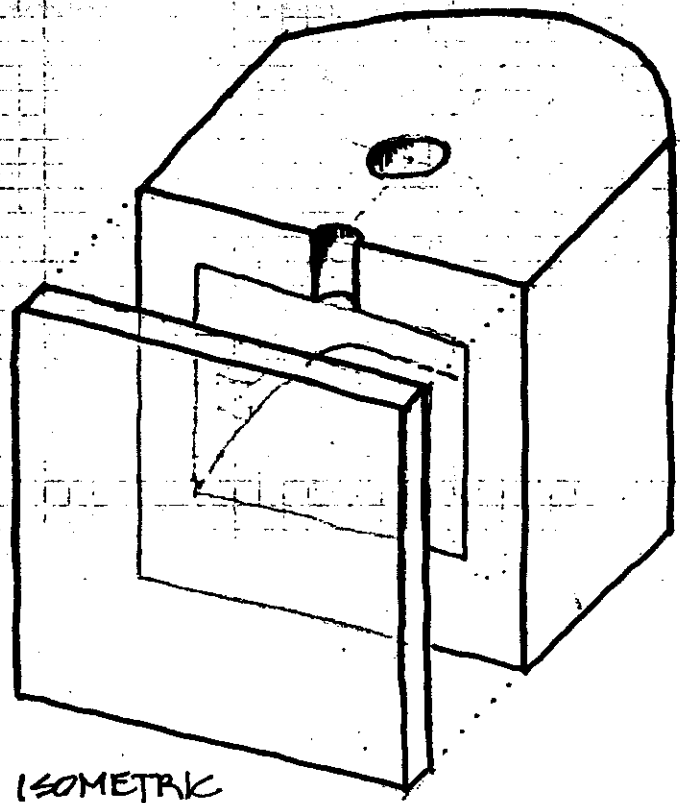
- SCULPTOR SHALL SUBMIT SKETCH(ES) AND/OR SHOP DRAWINGS OF BUST FOR APPROVAL OF NEBRASKA HALL OF FAME COMMISSION AND DAS BUILDING DIVISION PRIOR TO ANY FINAL CASTING OR FABRICATION. PROPOSED FINISH(ES) SHALL ALSO BE NOTED ON SKETCHES AND SAMPLES SUBMITTED WITH DRAWINGS FOR APPROVAL.
- DEVIATIONS IN FINAL BUST (FROM APPROVED SKETCHES NOTED ABOVE) OR EXCEEDING MAXIMUM DIMENSIONS SHOWN ON THIS DRAWING, MAY CONSTITUTE REJECTION OF FINAL BUST REQUIRING SCULPTOR TO RECONFIGURE AND/OR RECAST ENTIRE BUST TO CONFORM TO APPROVALS OR STANDARDS NOTED.

**NEBRASKA
HALL OF FAME
BUSTS**

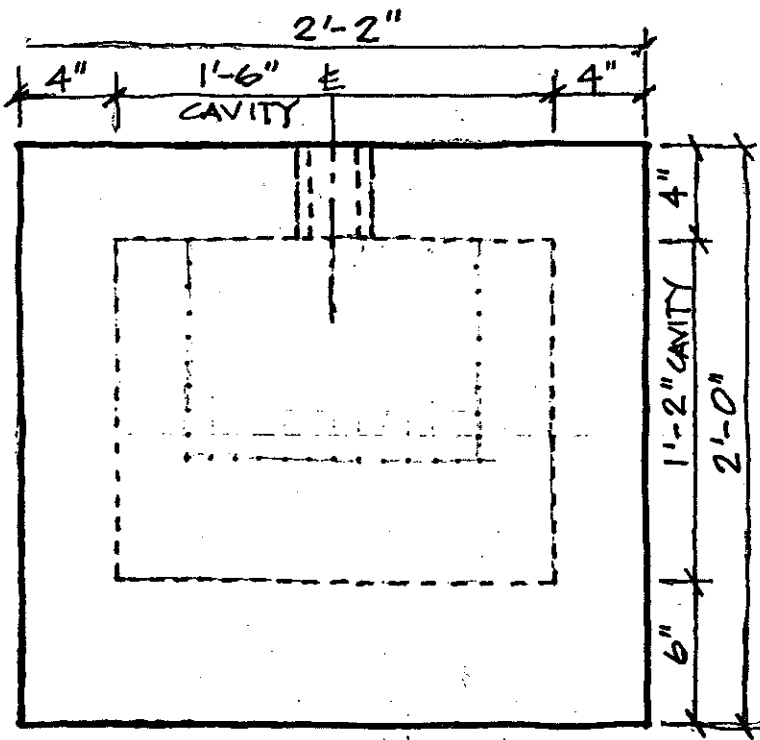
NO SCALE



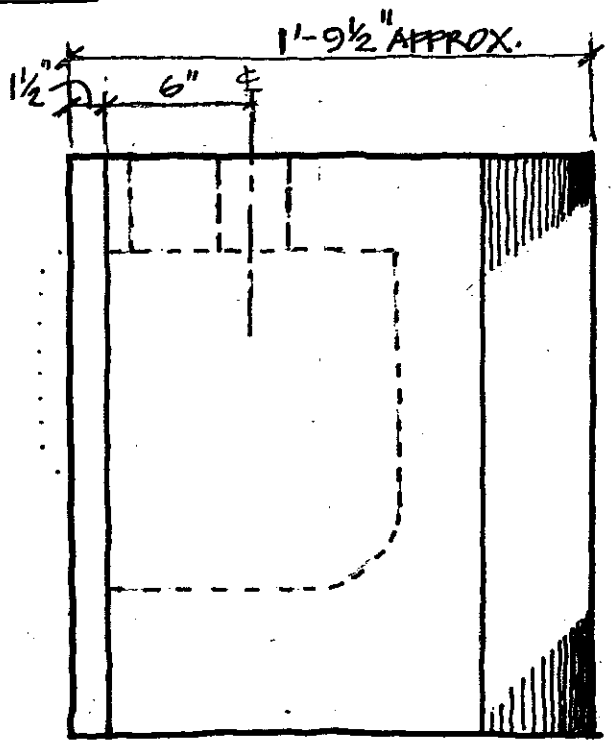
TOP



ISOMETRIC



FRONT

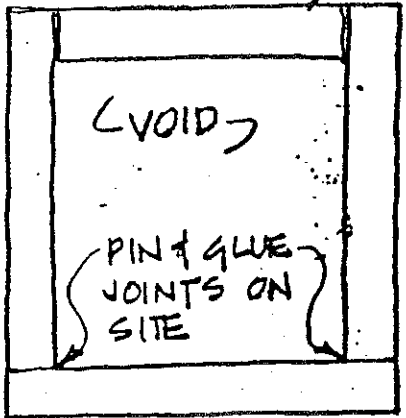
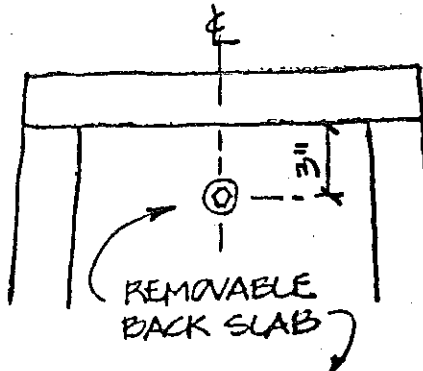


RIGHT

- SPECIFICATION-
- INDIANA LIMESTONE - SELECT
 - SMOOTH FINISH
 - PERFECT FIT REQUIRED BETWE FRONT PLATE & BLOCK W/CAVIT

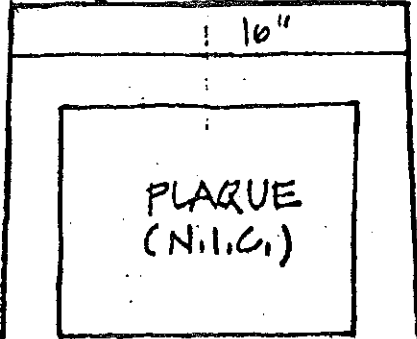
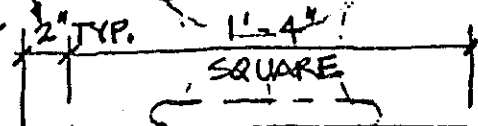
FOYER NICHE PEDESTAL

HALL OF FAME PEDESTAL NEBRASKA CAPITOL RCY/12-91



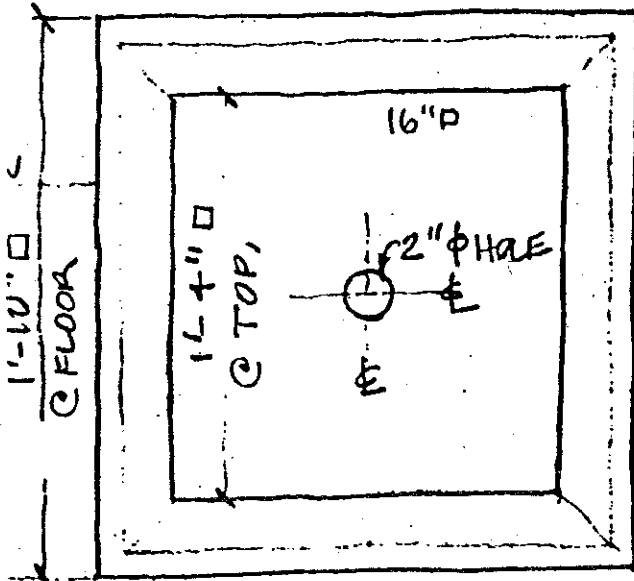
FRONT

BATTER TYP. ALL SIDES

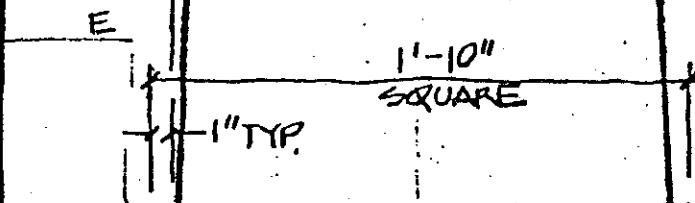


812-279 1735

5'-0"



PLAN VIEW 22" P



FRONT ELEVATION
(SIDE SIMILAR W/O

(FLR)

11

HALL OF FAME PEDESTAL NEBRASKA CAPITOL RCM/12-91

